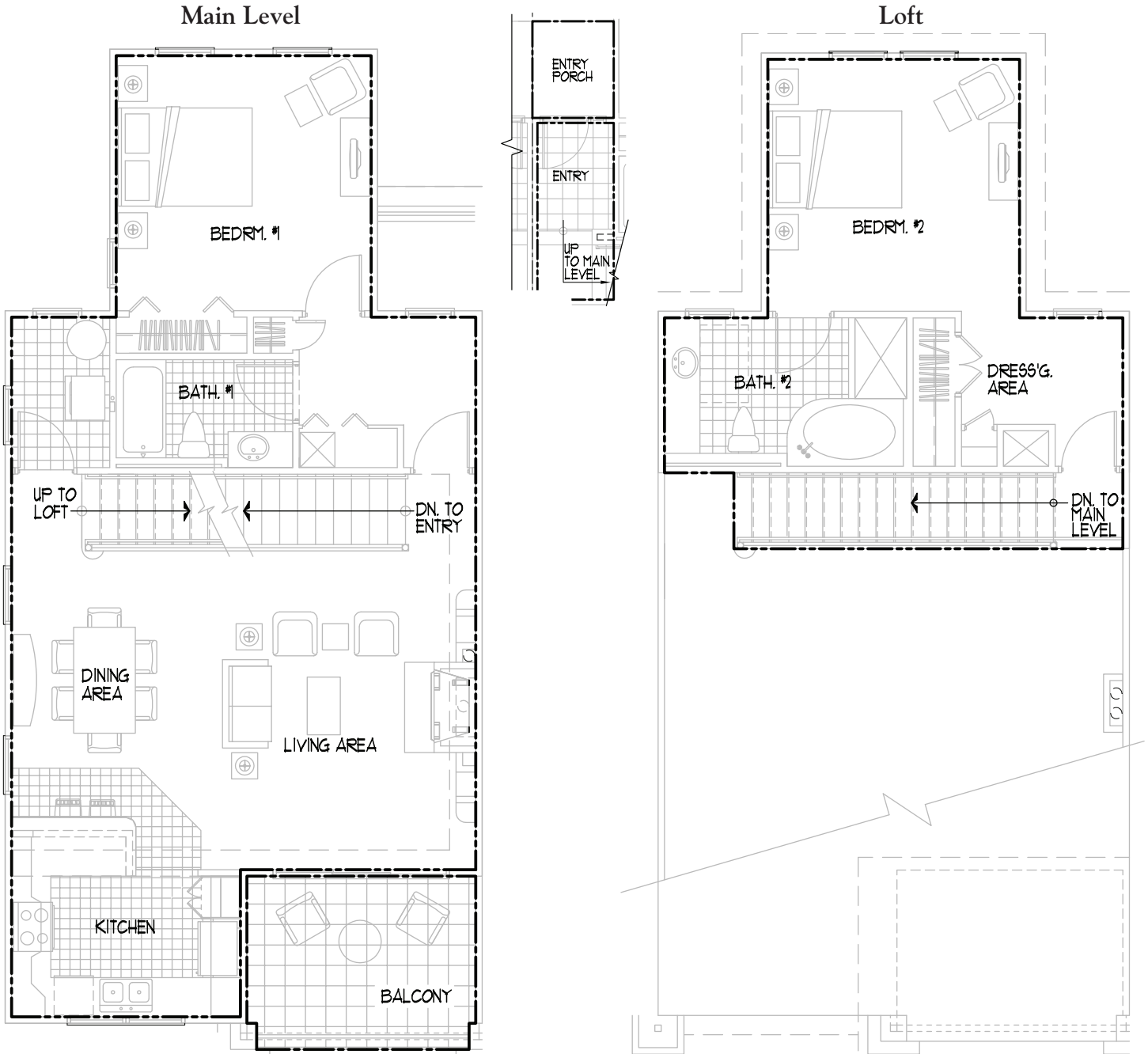


The Villas

Unit C – 2 Bedroom



Unit C – 2-Bedroom Unit

Total A/C Area

| | |
|-----------------------|--------------|
| Main Level | 928 |
| Loft | 441 |
| Lower Level Entry | 58 |
| Total A/C S.F. | 1,427 |

Non A/C Area

| | |
|---------------------------|------------|
| Balcony | 102 |
| Entry Porch | 34 |
| Total Non A/C S.F. | 136 |

| KEY | |
|-----|----------|
| | A/C AREA |
| | NON A/C |

Unit C Total S.F. 1,563

Note: Indicated areas are derived from design configuration and subject to variation in as-built condition.